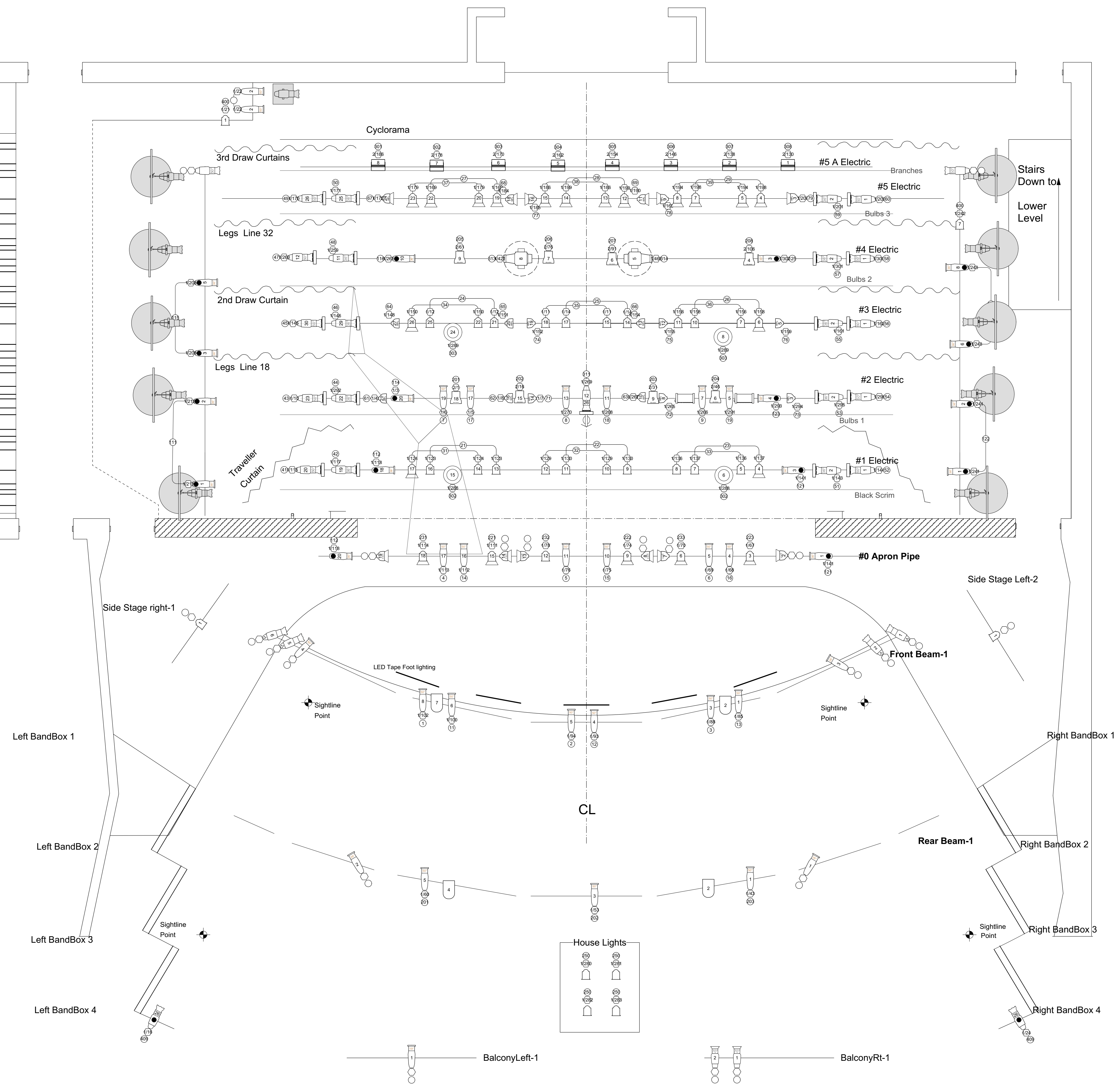


Lineset	Information	Trim
40	Cyc	
39	#5 Legs/Draw Curtain	
38	#5 Border	22'-8"
37	Branches	
36	Paint Drop (storage)	
35	#5 + SA LX	20'-5"
34	Light Bulb Drop 3	
33	Stage Left Side Electric	14'-9"
32	#4 Legs	
31	#4 Border	16'-6"
30	RP Screen (storage)	
29		
28	#4 LX	21'-0"
25		
24	Light Bulb Drop 2	TBD
23	#3 Legs/Draw Curtain	
22	#3 Border	17'-11"
21	#3 LX	21'-4"
20		21'-10"
19	#2 Legs	
18	#2 Border	16'-11"
17	Stage Right Side Electric	14'-11"
16	#2 LX	20'-2"
15		
14	Light Bulb Drop 1	
13	#1 Legs/Draw Curtain	
12	#1 Border	16'-2"
11		
10	#1 LX	19'-8"
9		
8	Scrim	
7	Grand Drape	
6	Grand Border	14'-8"
5		
4		
3		
2		
1		
	Apron Pipe (Motor)	16'-5"



Instrumentation

Symbol	Description	Count
	6" Fresnel	50 / 101
	Strand SL26	3 / 28
	Strand SL36	26 / 35
	Strand SL50	6 / 38
	ETC Source 4 26°	3 / 52
	ETC Source-4 36°	30 / 50
	ETC Source-4 50°	13 / 42
	Etc Source 4 70°	2 / 2
	Etc Source 4 90°	0 / 2
	ETC Source 4 LED	4 / 4
	ETC Source 4 PAR MCM (WFL)	18 / 22
	D60 Vivid SELO2040	8 / 8
	SS-Cyc 100	8 / 8
	VL-1000 Tungsten ERS	2 / 2
	DMX Iris	1 / 2
	Forerunner 7	21 / 22
	Rosco I-Cue	1 / 5
	7.5" 4 Leaf Barn Door	17 / 50

Color	Size	Count
Light Blue	L201 + R119 6.25"	12
White	N/C 6.25"	18
Orange	R02 + R119 6.25"	9
Yellow	R08 7.5"	18
Light Green	R104 6.25"	10
Green	R119 6.25"	10
Blue	R365 7.5"	12
Purple	R37 7.5"	12
Dark Blue	R80 6.25"	2
Light Blue	R80 7.5"	2
Dark Blue	R81 7.5"	24

Key

Unit Number
 Address
 Channel

Notes

All circuiting to be approved by ME

Trim heights and boom placement at discretion of designer

D60 Instruments to be paired with medium oval lens orientated US-DS

This drawing represents visual concepts and construction suggestions only. It does not replace the knowledge and advice of a licensed structural engineer. The designer is unqualified to determine the structural appropriateness of this design and will not assume responsibility for improper engineering or use.

ST. OLAF COLLEGE St. Olaf Dance Department
 Venue: Kelsey Theater
 Date: 4/16/2017

Project Title: **Spring Concert**

Scale: 1/4" = 1' - 0"

Print: 4/16/2017

CAD File Name: Spring Concert V2

Revision History	
1:	11/20/16
2:	4/15/17
3:	
4:	